

# Product Information



## Aircraft Compass – Navigator Series

**Code:** NV2C-12 or 28V (Illuminated Version)

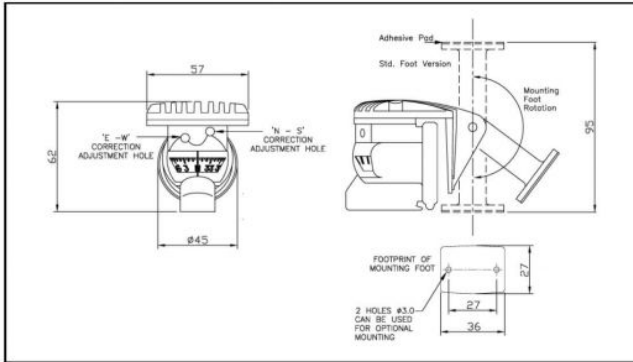
**Description:** A lightweight and versatile compass designed for use in light aircraft but also used in rugged vehicles for special purpose applications.

The compass is fully approved to TSO C7d and can be installed in a range of positions due to its unique rotating rear mounting support. Location can adjusted to obtain the best for view and magnetic location.

The compass card legend is Fluorescent Yellow and has Blue LED illumination\*. Up to 30° magnetic correction can be achieved for directional errors and alignment accuracy can be optimised by rotating the compass body about its support. \*additional mounting feet are available as accessories, see web site Product Resources

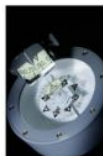
**Specification:**

Construction	Polycarbonate (70%) Aluminium Alloys, Brass, Silicone fluid (30%)
Body Colour	Black
Illumination Type / Colour/ Voltage	LED/ Blue / 12 or 28V
EASA Approval	ETSO C7d
FAA Approval	TSO C7d
Magnetic Correction	Up to 30°
Body height	62mm
Max Width	57mm
Weight	133g
Max Tilt	20°
Operating Temp Range	-40 to + 85°C
Qualification Specs	RTCA DO160D
Warranty	3 Years



SIRS Navigation design, manufacture, calibrate and repair a wide range of specialist compasses

For more information please view our website at [www.sirs.co.uk](http://www.sirs.co.uk) or call our sales team.



Compass House, Bowes Estate, Wrotham Road, Meopham, Kent DA13 0QB England  
T: +44 (0) 1474 816320 F: +44 (0) 1474 816321 E: [sales@sirs.co.uk](mailto:sales@sirs.co.uk) [www.sirs.co.uk](http://www.sirs.co.uk)